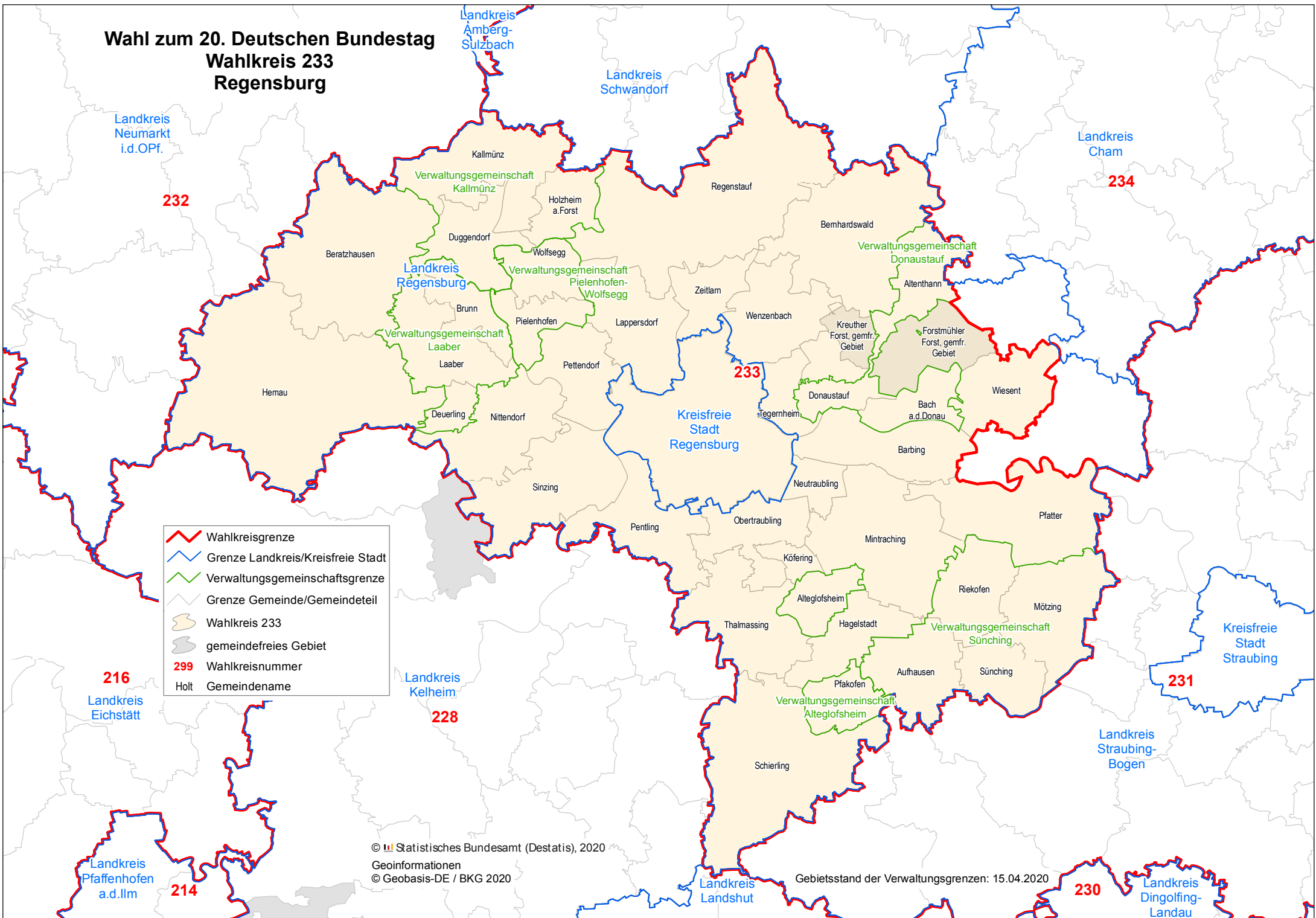









Wahl zum 20. Deutschen Bundestag Wahlkreis 233 Regensburg



-  Wahlkreisgrenze
-  Grenze Landkreis/Kreisfreie Stadt
-  Verwaltungsgemeinschaftsgrenze
-  Grenze Gemeinde/Gemeindeteil
-  Wahlkreis 233
-  gemeindefreies Gebiet
-  299 Wahlkreisnummer
-  Holt Gemeindegrenze