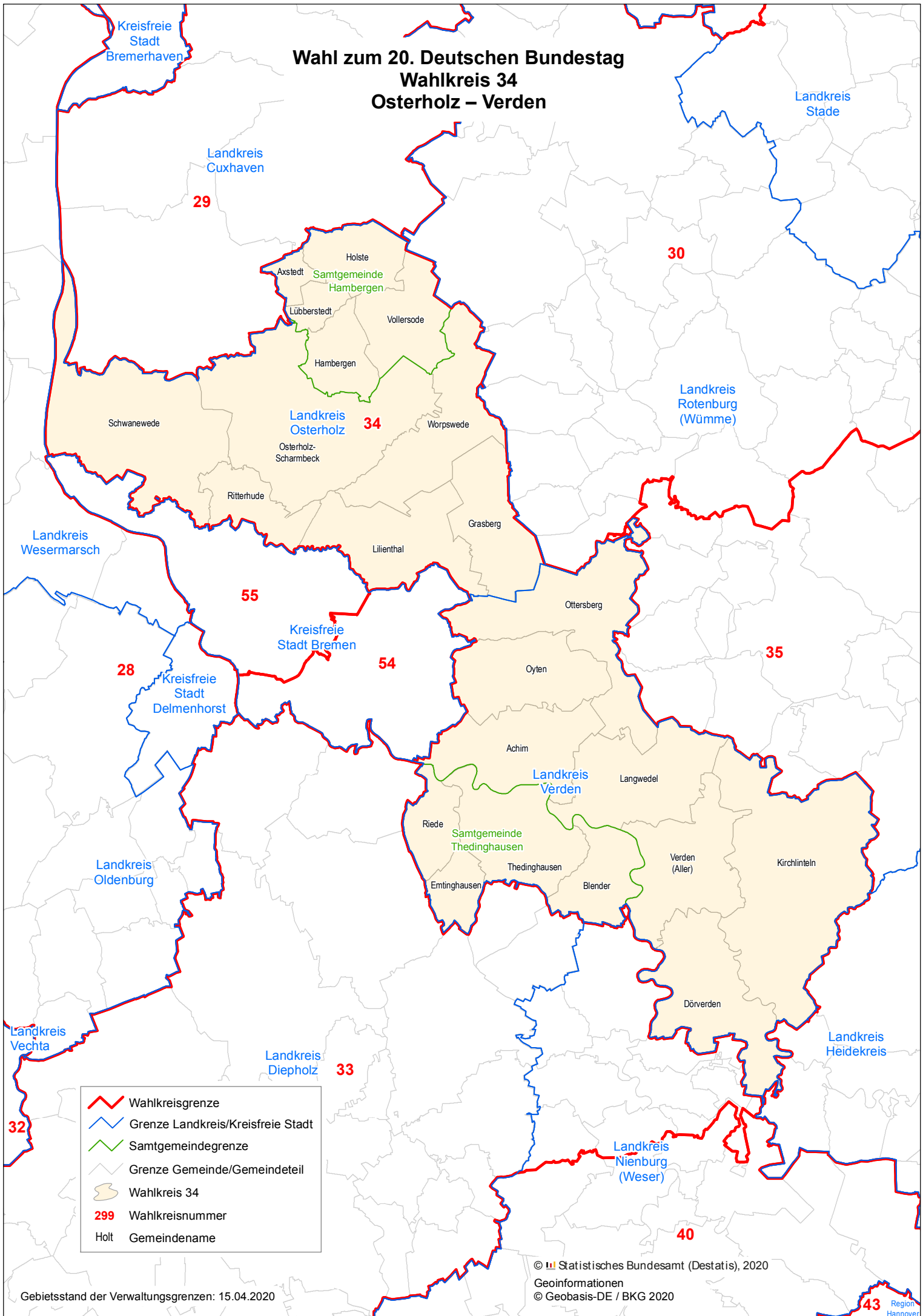









# Wahl zum 20. Deutschen Bundestag Wahlkreis 34 Osterholz – Verden



-  Wahlkreisgrenze
-  Grenze Landkreis/Kreisfreie Stadt
-  Samtgemeindegrenze
-  Grenze Gemeinde/Gemeindeteil
-  Wahlkreis 34
-  299 Wahlkreisnummer
-  Holt Gemeindename